



# COMMERCIAL BALUSTRADING SOLUTIONS SYDNEY

Supply & Install

# TABLE OF CONTENTS

<b>Project Portfolio</b>	<b>01</b>
Projects	
Our Clients	
Our Builders	
Our Architects	
<b>Product Categories</b>	<b>38</b>
<b>Our Services - End to End</b>	<b>52</b>
<b>Bright Signature Process</b>	<b>54</b>
<b>What Sets Us Apart - Unique Advantage</b>	<b>55</b>
<b>About us</b>	<b>56</b>
Overview	Purpose
Mission	Our Purpose
Vision	Our Maxims
Values	What we stand by
<b>Our Plant, Equipment, Office and Factory</b>	<b>59</b>
Span Of Operations	
<b>Work Health &amp; Safety Guidance</b>	<b>60</b>
<b>Environmental Management Policy</b>	<b>61</b>
Environmental Policy Objectives	
<b>Quality Assurance</b>	<b>62</b>
ISO 9001 Quality Management Certification	
<b>Our Insurances</b>	<b>64</b>
Workers compensation	
Public Liability	
Professional Indemnity- Engineering Consultant	
<b>Community Involvement</b>	<b>67</b>
Client Testimonials	
Customer Service Philosophy	



# BRIGHT BALUSTRADING

PROJECT PORTFOLIO  
2024 - 2025



Pages 04-41

## Boutique Cartier Flagship Sydney

Client: **Cartier**  
Builder: **PQI Group**  
Architect: **PTID & D.P.J  
& Partners**



  
**PQI**  
**GROUP**



### Curved Glass Balustrade

12mm superclear  
toughened glass in  
custom channel.

### Curved Handrails

50mm round stainless  
steel powder coated  
handrails with special  
angel dust finish  
applied

## Microsoft Head Office North Sydney – MPA



Client: **Microsoft** /  
**CBRE** / **WINTEN**  
Builder: **MPA Construction**  
Architect: **GSA**

**CBRE**

### Handrails

Integrated LED  
timber handrail system  
custom routed into  
solid Tasmanian Oak

### Glass Balustrade

15mm Structural Laminat-  
ed Toughened Safety Glass  
Balustrades into an  
engineered dry glazing  
channel system

## McDonald's Head Office - Thornleigh

### Curved Glass Balustrades

McDonald's yellow brand colour 13.52mm Structural Laminated Toughened Safety curved glass Balustrades side fixed with solid stainless steel standoffs

### Curved Handrails LED:

Stainless steel integrated LED handrail system



Project:

**McDonald's Head Office Sydney**

Client: **McDonald's**

Head Contractor: **ID Fitouts**

Architect: **Richard Ross**

## Art Gallery of NSW – Sydney



Project:  
**Art Gallery Art  
Garden – Sydney**  
Client: **NSW Government**  
Developer: **DCG Design**  
Architect: **DCG Design**

**ART  
GALLERY  
NSW**

### **Brass Handrails LED**

Brass integrated LED  
handrail system with  
puck / spot lights

## Lendlease – International Exhibition Centre Sydney



Client: **Lendlease**  
Builder: **NSW Government /  
Darling Harbour Live**  
Architect: **Populous & Hassell**

  
lendlease

### Handrails

Stainless Steel  
handrails with custom  
laser cut flat bar  
posts

### Automatic Metal Gates

Galvanised mild steel  
frame with perforated  
sheet lining

BE SAFE USE  
THE HANDRAIL

## Nadi International Airport – Fiji Airports

### Brass Handrail LED System

Brass handrails LED  
system curved handrails  
custom fabricated fully  
assembled with LED  
spot lights

**CMG**  
Construction Managers Global



Client: **Fiji Air-  
ports/Fiji Government**  
Project: **Air Laucala Hangar @  
Nadi International Airport**  
Builder: **Construction Managers Global**  
Architect: **Cox Architecture**

## 52 Byron Street – Coogee Diggers Club



Client: **RSL  
Australia**

Builder: **Girvan Group**

Architect: **Pony  
Design Co.**

# GIRVAN



**Handrails  
to ramps &  
Stairs:**

Brass handrail  
with powder  
coated



**Curved  
Brass balus-  
trade flatbar &  
Aluminium  
balustrade  
flatbar**

## QBE Sydney – The Galleries



**QBE**



Project: **QBE Sydney**  
Client: **QBE Insurance Group**  
Builder: **MPA Constructions**  
Architect: **GSA**

### **Curved handrails LED Integrated:**

American Oak Timber  
handrail fabricated with  
custom LED housing  
groove



## Amazon Fulfilment Centre – Horsley Park



**PRIME**  
CONSTRUCTIONS



Client: **Amazon /**  
**ESR Australia & NZ**  
Builder: **Prime Constructions**  
Architect: **Pace Architects**

Semi-frameless  
glazing post balus-  
trades  
&  
Glazing channel  
frameless balus-  
trades

**Handrails:**  
Powder Coated  
handrails

**Fire Stair  
Guardrails:**  
Galvanised steel  
handrails

## Mirvac – Auburn Switchyards



**PRIME**  
CONSTRUCTIONS



Client: **Mirvac**  
Builder: **Prime  
Constructions**  
Architect: **SBA  
Architects**

Stair flat bar  
balustrades



Ramp  
balustrades



Stair frameless  
glass balus-  
trades &  
handrails

## HammondCare Miranda

### Handrails:

Off-set stainless steel handrail (welded). Stainless steel handrails AS1428 compliant.

Curved glass balustrades/glass barriers with clear toughened glass

**HammondCare** 

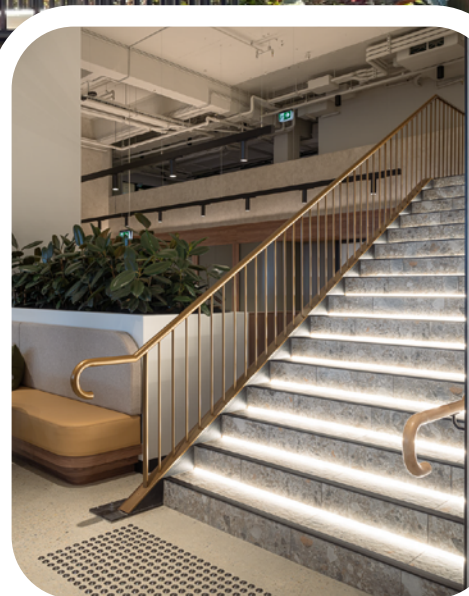
**TOTAL**  
CONSTRUCTION

Client: **HammondCare**  
Builder: **Total Construction**  
Architect: **AJC Architects**

## Retail Apparel Group Head Office – Roseberry

Client:  
**Retail Apparel  
Group** (Taro-  
cash/Connor/YD)  
Builder: **Intermain**

**INTERMAIN**



### Ramp balustrades & Handrails:

Powder Coated heavy duty stainless steel custom handrails.



### Balustrade curved barrier

Custom system with curved solid rod infills with curved/rolled flat bar frame



## Rosebay – Kincoppal



**KINCOPPAL – ROSE BAY**  
SCHOOL OF THE SACRED HEART

Client: **Kincoppal**  
– Rosebay, School of the  
Sacred Heart

Architect: **BVN**

### Flat Bar Balustrades:

Curved balustrades  
flat bar side fixed to  
stairs and walk-  
ways

### Handrails:

Stainless steel  
handrail (welded).  
Stainless steel  
handrails AS1428  
compliant.

## Westmead Innovation Quarter - WSU - RCC

### Handrails

100mm elliptical  
timber American  
White oak handrails  
with custom  
20mm rod  
brackets

Toughened  
laminated heat-soaked  
glazing with 316 stainless  
steel spider fittings standoffs to  
structural custom laser cut,  
fabricated/welded &  
engineered stainless steel flat  
bar stanchions. Side fixed  
from internal void areas  
along 3 sides.



**WESTERN SYDNEY**  
UNIVERSITY

**RICHARD CROOKES**  
CONSTRUCTIONS

Client:  
**Charter Hall & WSU**  
Builder: **Chevalier Aluminum  
Engineering & Richard Crookes**  
Architect: **Architectus**

**88 by JQZ - St Leonards**



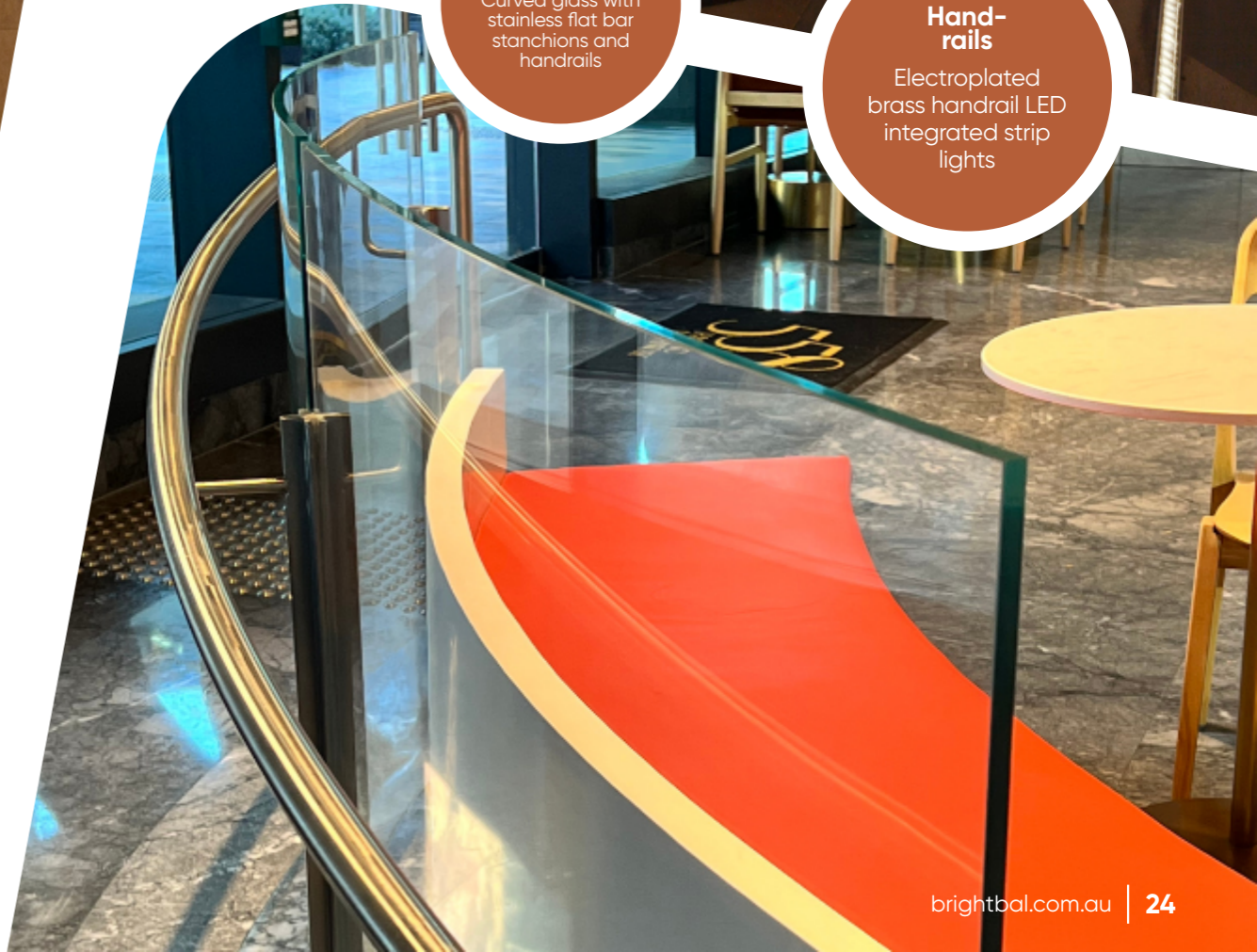
**Ramp handrails:**  
Curved glass with stainless flat bar stanchions and handrails

**Hand-rails**  
Electroplated brass handrail LED integrated strip lights

Project:  
**EIGHTY EIGHT  
BY JQZ St Leonards**  
Client: **JQZ**  
Builder: **JQZ**  
Architect: **PTW**



**Curved glass frameless structural balustrade**  
21.52mm SGP laminate super clear low iron toughened glass in heavy duty dry glazing channeling



## Wright Pools – URBNSURF, Sydney Olympic Park

Client: **URBANSRF**  
Builder: **Wright Pools / Lipman**  
Architect: **Clarke Hopkins  
Clarke**

Mirror  
polished 316  
marine grade  
stainless steel  
handrails with  
kerbrails

## Santa Sophia Catholic College – Box Hill



Client:  
**Catholic Education  
Diocese of Parramatta**  
Builder: **Chevalier (Aluminium Engi-  
neering) Australia/Buildcorp**  
Architect: **BVN Architecture**

CHEVALIER

Double  
stainless steel  
handrails fixed  
onto the aluminium  
box section façade  
for internal access  
stairs.

Double  
handrails fixed  
to aluminium  
mullions.

Curved  
handrails

Freestand-  
ing stainless  
steel handrails  
with flat bar  
posts.

## Akoya – 2 Greenwich Road

**Ramp  
Handrails LED  
System:**

Mirror polished  
stainless steel  
handrail LED  
integrated.

Project:  
**Akoya Greenwich**  
Client: **Alceon**  
Architect: **Marchese Partners**

## White Fox Boutique

Project:  
**White Fox Boutique**  
Client: **White Fox**  
Builder: **PMG Group**

Brass Handrails  
something  
something

Brass Handrails  
something  
something

## World Square Lobby - Sydney

Client:  
**Brookfield  
Properties, Arcadia  
Funds Management**  
Builder: **MPA Construction**  
Architect: **Hames Shareley**



### Handrails:

Powder Coated  
heavy duty  
stainless steel  
custom  
handrails

### Structural glass balustrade system

Heavy duty dry  
glazing channel

## 14e Eastborne Rd – Darling Point

Client:  
**Private Residence**  
Builder: **AMICUS Homes**  
Architect: **YG Architects**

Amicus Homes

Brass Handrails  
Flat bar

## OUR CLIENTS



## OUR CLIENTS



# MAJOR BUILDERS/HEAD CONTRACTORS/DEVELOPERS LIST



# MAJOR BUILDERS/HEAD CONTRACTORS/DEVELOPERS LIST

**rohrig**

 **PATTERSON**  
Building Group

project**one**  
people • places • purpose

 **HICON**

**PRIME**  
CONSTRUCTIONS

**INFINITY**<sup>™</sup>  
Build. Above. Beyond.

  
**CONSTRUCTIONS**

GROWTHBUILT 

**ID FITOUTS**  
EST. 2009

**JOQZ**

**TOTAL**  
CONSTRUCTION

HUNTER  
MASON

**MAMMOTH**  
PROJECTS

  
ALLIANCE LIVING

**TAYLOR**

## ARCHITECTS PREVIOUSLY WORKED WITH

---

**POPULOUS®**

**WOODS  
BAGOT**

**GROUP GSA**

**C O X**

**BVN**

**Hassell**

**BATESSMART™**

**PTW**

**\* PTID**

 **DPJ & Partners**  
Architecture

**Richmond+Ross**  
CONSULTING ENGINEERS & PROJECT LEADERS

**pony.**  
DESIGN CO.

**sba**

**ALC**

**Clarke  
Hopkins  
Clarke**

**marchese**partners

**Hames  
Sharley**

**LawtonHurley**

# OUR PRODUCT CATEGORIES

## Handrails



Wall-fixed  
handrails



Free-standing  
Handrails



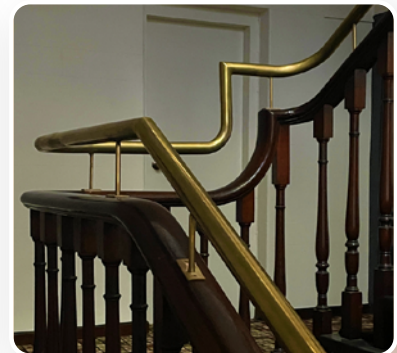
Single unit  
handrail



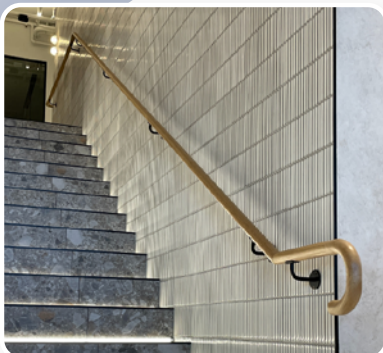
Double Handrails



LED Handrail lights  
Illuminated



Brass Handrails



Timber Handrails



Swimming Pool  
Handrails



Boat Handrails

## Aluminium/Metal Balustrade



Vertical infill with  
Midrail



Flatbar infills



Vertical infill NO Mid-  
rail



Hamptons Style  
Balustrade



3D Cantilivered  
Infills



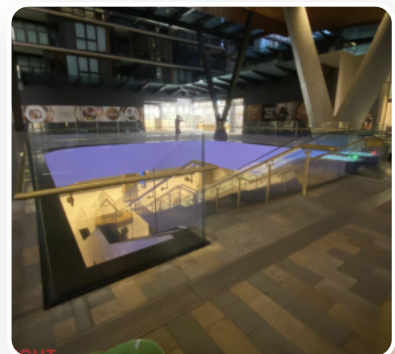
Glass balustrade  
glazed frame



Perforated Mesh infills



Wire Infill



Glazed Frameless  
Glazing Channel

# OUR PRODUCT CATEGORIES

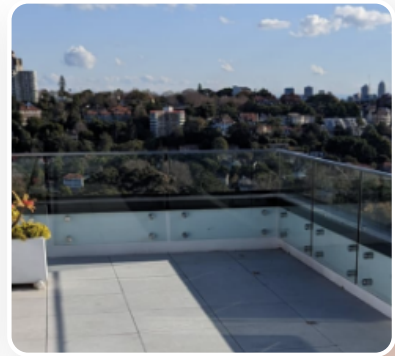
## Glass Glazed Balustrades



Heavy Duty Glazing Channel  
Balustrade System



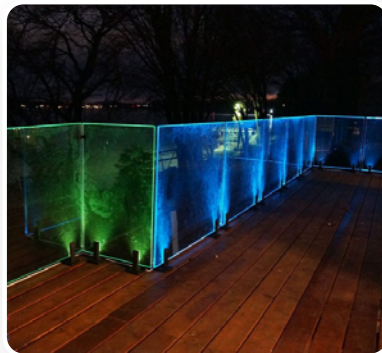
Framed Aluminium  
Glass Railings



Frameless Glass Railings –  
Stand-offs



Glass Wall



LED Glass Spigots With  
Glazing Channel



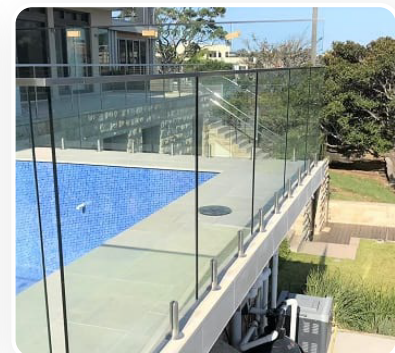
Privacy Glass Infills



Semi-framed – SS & Aluminium  
– Slotted posts & D clamps –  
Glass Railings



Stair Glass Balustrade –  
Stand-offs and Spigots

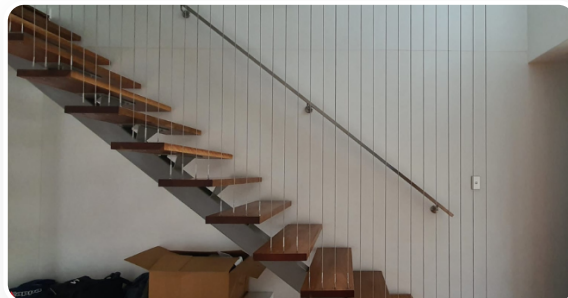


Frameless Glass Railings –  
Spigots

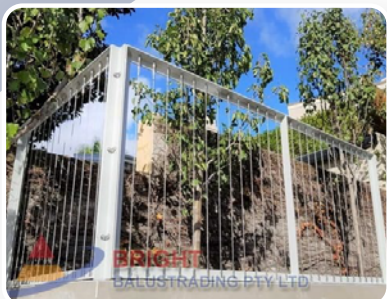
## Stainless Steel Wire Balustrade



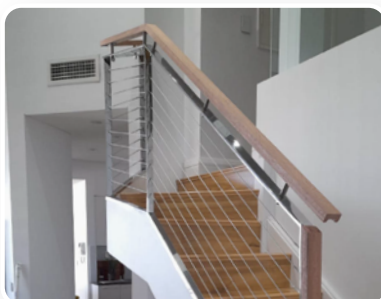
Horizontal Infills



Vertical Infill Barrier



Vertical Infill Balustrade



Wire with Timber toprail



Wire mesh



Install into existing posts

# OUR PRODUCT CATEGORIES

## Disability Ramp Handrails



Kerb rail



Kerb rail with glass glazing channel



Kerb rail with perforated mesh infill



Kerb rail with wire/baluster infills

## Fencing



Balcony Privacy Screen



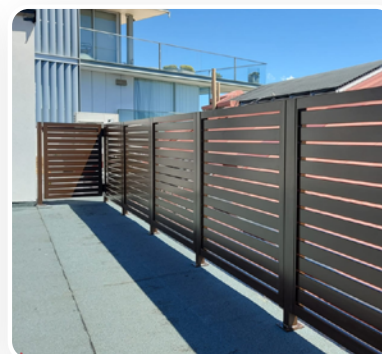
Security Fencing



3D Cantilevered Infills



Louvered/Angled Blade  
Infills



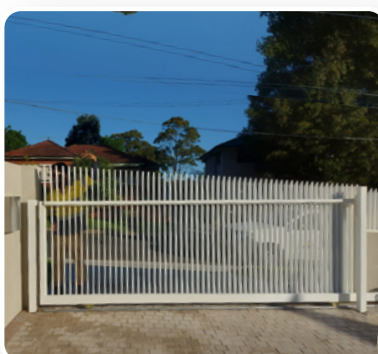
RHS Slats

## Gates



Credit: Automatic Gate Solutions

Gate Accessories



Driveway Gates - Sliding  
and Swing



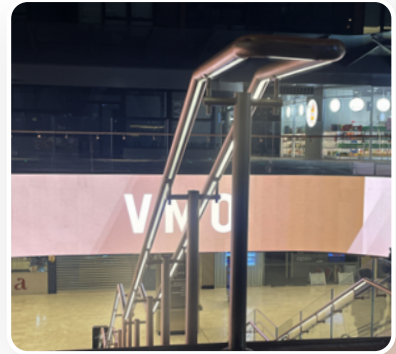
Pedestrian Gate

# OUR PRODUCT CATEGORIES

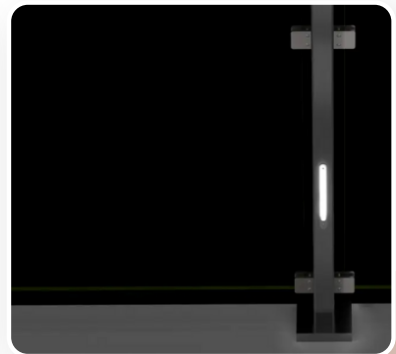
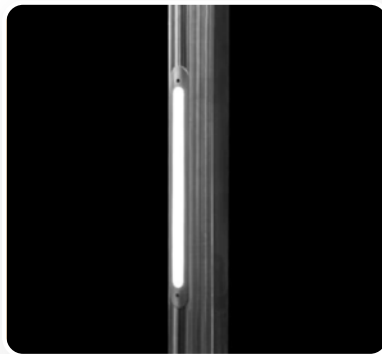
## LED Handrails



Integrated Spot/Puck LED

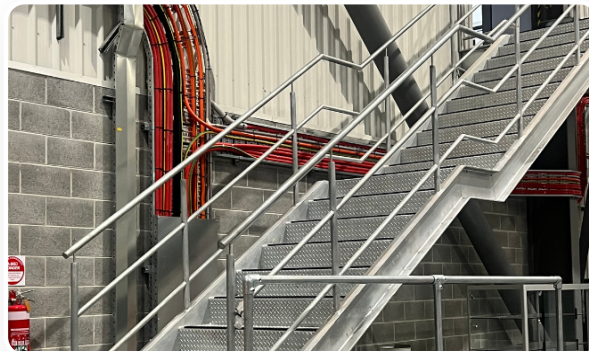


LED Handrail lights Illuminated

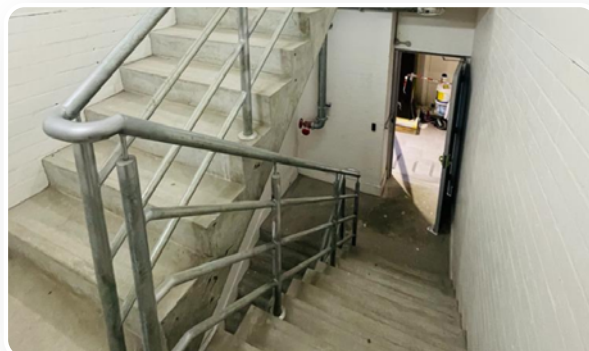


LED Bar Light integrated into posts

## Curved Glass/Handrails/Balustrades



Curved glass



Curved handrails



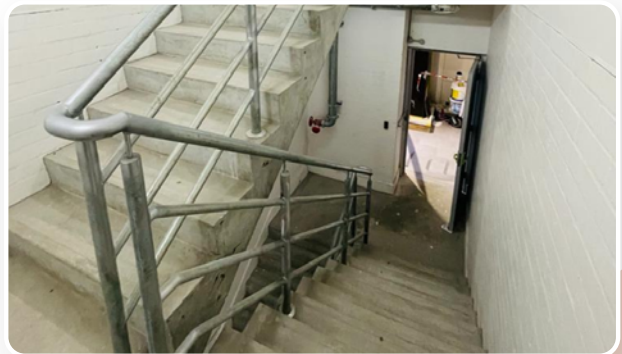
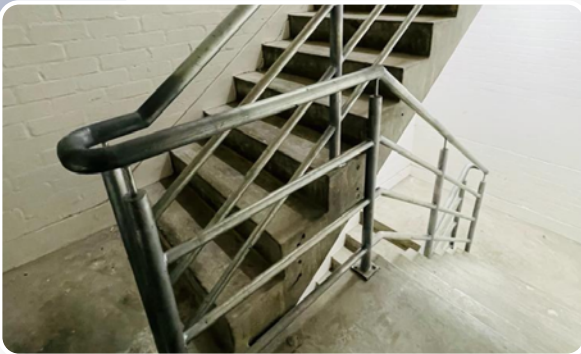
Curved balustrades

# OUR PRODUCT CATEGORIES

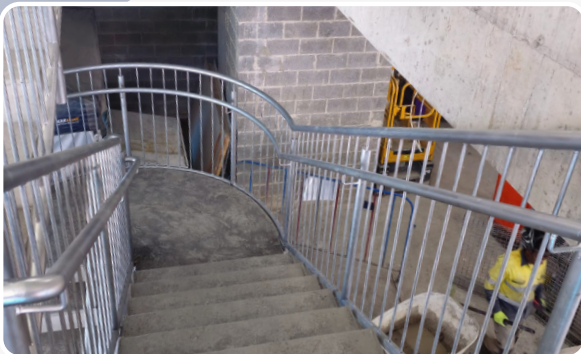
## Fire stair handrail



3-rail system



4-rail system



Vertical balusters

## Swimming Pool Fencing



Glazing Channel



Semi-frameless



Spigots

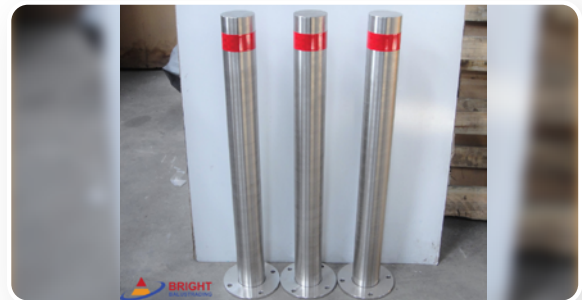


Aluminium - Flat top

## Bollards & Bike & Trolley Racks



Custom bike racks



Baseplated Bollards



Removable bollards



Security bollards



Custom trolley bays

# OUR PRODUCT CATEGORIES

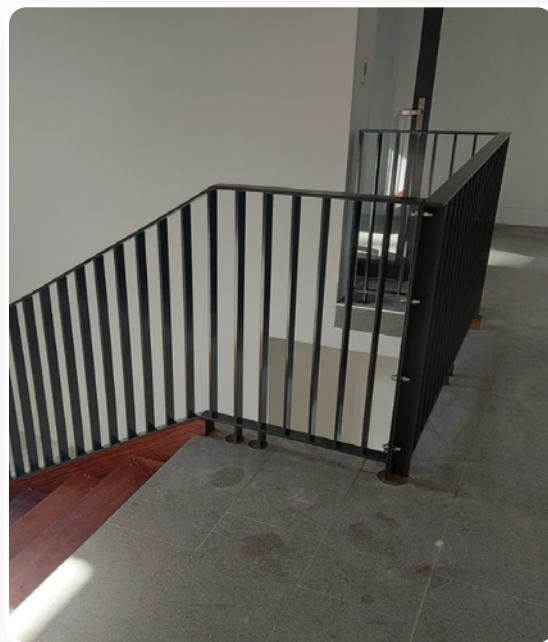
## Screens & Battens



## Flatbar & Rod Balustrade



Flatbar Infills with hollow frame



Flatbar frame and infills



Vertical rod infills



Horizontal & Custom rod infills

# OUR PRODUCT CATEGORIES

## Custom Designed Balustrades & Handrails



Onsite Stainless Steel Polish

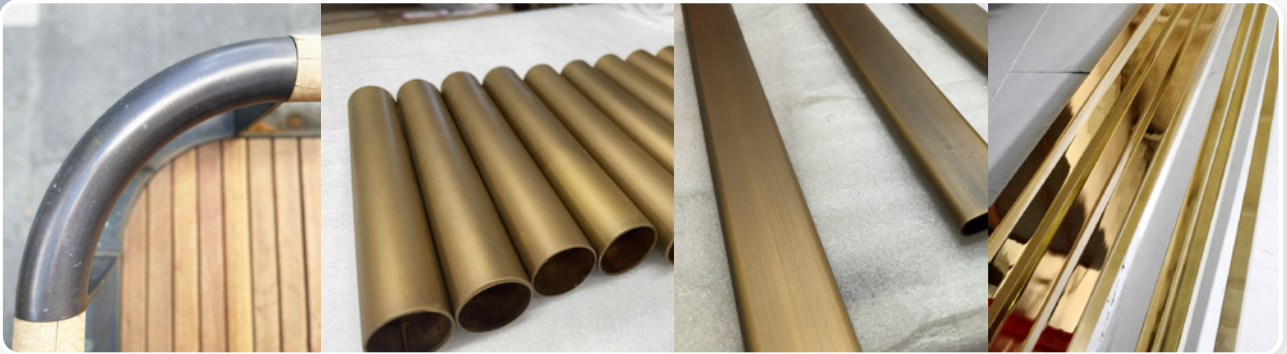


Onsite Stainless Steel Polish



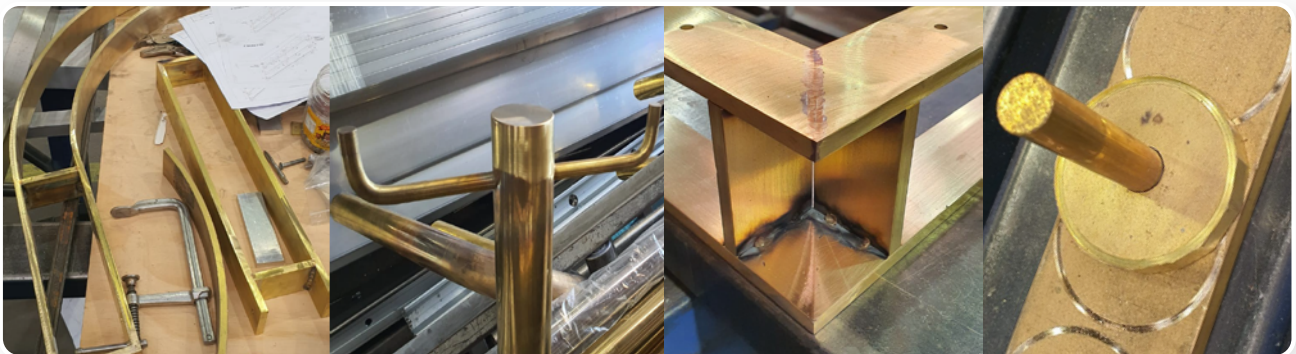
Onsite Stainless Steel Polish

## Electrostatic Painting & Finishes



Credit: Astor Metal Finishes

## Brass Fabrication Capabilities



Custom brass fabrication

## Polishing & Maintenance Service



Onsite Stainless Steel Polish

# OUR SERVICES – END TO END

## Quotation/estimation services

Our dedicated estimators provide accurate and fair quotes for private residential, strata and commercial clients such as builders, developers, quantity surveyors & architects onsite and off the plans. Our estimator service capabilities include:



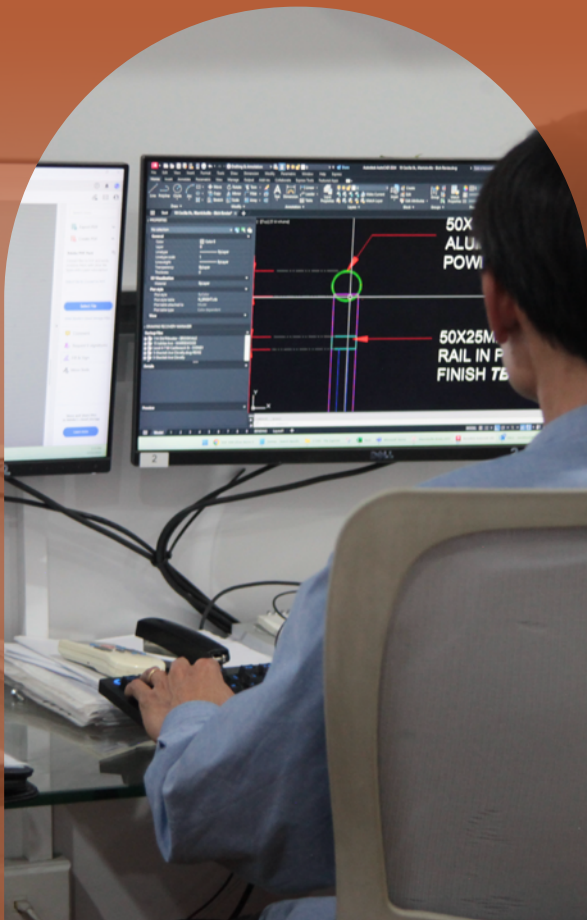
## Site Measurements

We attend your site to take accurate detailed site measurements.

## Computer Aided Designs (CAD) and drawings

We create the designs and drawings for your approval in line with fabricator and builder needs so you know what you are getting. CAD design services include:

- ◉ Visual design drawings/typical details
- ◉ Shop drawings
- ◉ Engineering design drawings
- ◉ Fabrication drawings
- ◉ Parts drawings
- ◉ Parts assembly drawings
- ◉ Installation drawings
- ◉ As built drawings





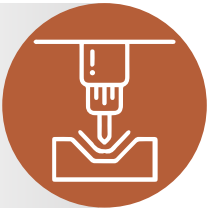
## Engineering:

We have our partner professional engineering consultant whom work independently to assess structural adequacy and certification of our balustrade systems to ensure compliance with all engineering/NCC/ AS Standards as required.



## Materials procurement

Bright has built long-lasting relationships with reputable Australian suppliers. This means meaning we guarantee materials are locally sourced including fittings, tools, and materials available off the shelf and custom-made goods:



## Fabrication

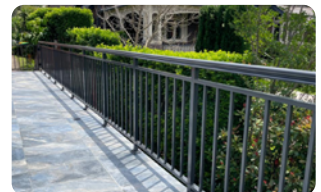
Our purpose-built factory in Greenacre 2190 is ensures welds are conducted by the most experienced TIG welders for enhanced quality and structural superiority. Our dedicated fabrication manager personally stands over on time delivery without comprising quality.



## Surface Finishing

We provide the best-in class finishing services

- Powder coating
- Spray/Painted
- Hot Dip galvanising
- Gold, Brass and Bronze plating (not limited to) electroplating



## Installation

We maintain the highest Safety Management systems, so all installs are done safely and skillfully, including detailed mark outs and set outs, core drilling of surfaces, installation team minimums of 2 skilled tradesmen/technicians/welders.



## Post Completion

To ensure full satisfaction we provide comprehensive handover documents that include warranties on materials & workmanship, Certificate of Compliance to relevant BCA/NCC/AS standards, structural adequacy report (If required) and customer satisfaction surveys

# BRIGHT SIGNATURE PROCESS

How your project gets from quotation to completion.

## Site analysis.

### To achieve the following

- To assess client requirements can be met
- Confirm BCA/NCC/AS requirements will/can be met with the proposed style
- Confirm access & installation method
- Confirm selected style/product is suitable for the client & the surrounding environment Confirm conformance with quote and contractual sum



## CAD / DRAWINGS / SKETCH.

### To achieve the following

- Provide visual representation
- Assess suitability of design
- Reduce risk of error in fabrication
- Ensures client knows what they're getting
- Engineering/Design compliance

## Onsite installation

- Bright selects the most suitable team of installers based on their strengths
- Bright has over 6 teams which constitute with over 13 skilled tradesmen & 6 specially kitted out utes.
- Designated team lead / Site manager assigned

## Documentation & Communication & Customer service

- Clear communication in every stage of works
- Ensuring high customer satisfaction is met
- All documentation supplied when most relevant:
- Insurances. Public Liability, Workers Compensation and Professional Indemnity Insurances
- Compliance Certification
- Warranty Certificate for materials and workmanship
- Cleaning & Maintenance Manuals
- Contractors License

# WHAT SETS US APART



## Our People

Our leadership team have over 100 years combined experience in the industry. We recruit the best talent from all over the country & enjoy exceptionally low turnover rates as our brand is known for how well we treat our team & clients.



## Our Specialization

We excel beyond normal standards in bespoke custom fabricated metalworks particularly in stainless steel, glass, aluminium, brass & electroplated handrails. All works are custom fabricated by our skilled inhouse fabricators using locally sourced materials.



## Our Estimating

Our Estimators & Sales teams come from a Project Management background. With clear understanding & experience with the concepts of design intents, D&C Contracts, Performance, and engineering solutions, this ensures your project is priced correctly & accurately.



## Our Clients

We exceed expectations for our clients who are expected to deliver superior quality for their own clients. We know what it means to your reputation.



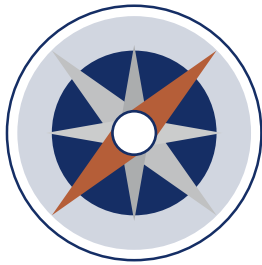
## Our Standards

We are one of a select few metalwork supply and installation companies with ISO 9001 Quality Management Certification in Australia.



## Our Process

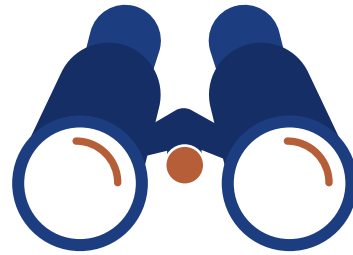
Custom developed processes that caters to our exact sales, operations and accounts department need to curate the most streamlines, efficient and effecting process for delivery for our clients.



## MISSION

Our mission is to be the metalwork, handrails, & balustrades contractor of choice for all people & projects.

We strive to make our name synonymous with exceptional quality & extraordinary delivery standards.



## VISION

Redefining and setting higher standards on how balustrade & handrails contractors deliver their products from end to end. First contact to post completion. The best quality and customer experience.

## CORE VALUES



Quality

Efficiency

Professionalism

Client experience & impression focused

Cleanliness & presentability

# OUR PURPOSE

**Achieving our client's primary objectives which may be one or a multiple of the following:**

- ✓ Style, Luxury
- ✓ Safety
- ✓ Durability
- ✓ Competitive & fairly priced solution
- ✓ Speed of delivery
- ✓ Compliance with NCC/BCA/AS/  
Council requirements



**Helping deliver projects and spaces where it's occupants and users are safe & can take pride in their surrounding built environment.**

**Delivering works that are of highest quality:**

Materials

Workmanship

Finishes

Client  
experience

Engineering



## BRIGHT BALUSTRADING PROMISES TO OUR CLIENTS TO

Deliver the utmost quality compliant works that actively enhances client experience.

Attend to detail as though your home was our own.

Leave the spaces where our works are skilfully completed, more attractive and valuable than before.

## OUR **MAXIMS** (WORDS WE LIVE BY):

- ✔ Treat others the way you expect to be treated. Be reliable.  
Be Dependable.
- ✔ Maintain highest quality - Materials & Workmanship
- ✔ Carry yourself with the best of character. Uphold, protect and expand Bright's good reputation.
- ✔ Dedication to client experience & clients desired outcomes

### WE STAND FOR

- Competition
- Specialisation
- Accomplishment
- Proactivity

### WE STAND AGAINST

- Mediocrity
- Chaos
- Miscommunication/Lack of clear communication
- Poor/No planning

## OUR PLANT, EQUIPMENT, OFFICE AND FACTORY

- Separate workstations of dissimilar metals. Separation between Black/Mild steel and stainless steel to avoid cross contamination
- Dedicated area for quality control and protection wrapping
- 5 dedicated utes with thoroughly maintained registers for tools and safety equipment
- TIG, MIG & Stick welding machines to weld any type of metal for any purpose which includes all grades of Stainless steel including 316, 316L, Duplex as well as all grades of aluminium, all types of steel including black and galvanised, brass, and bronze metals.
- Internal goods lift for access to mezzanine floor for a cleaner workplace
- 2 office workspaces. 1 for sales and administration staff with another for marketing related personnel
- Board room area for internal and external party meetings
- Secure server room for IT related assets with cloud backups



## Span of Operations

Bright Balustrading services and operates in the Sydney & greater Sydney areas of NSW, Australia.

Bright Balustrading's clients and projects are in the following council areas as they are located near the sea & other waterbodies which means stainless steel is the most preferred metal and Bright Balustrading's speciality. These areas are:

# WORK, HEALTH AND SAFETY GUIDANCE

Bright Balustrading Pty Ltd recognises its moral and legal responsibilities, particularly with regard to the Work Health. To ensure the upkeep of our unblemished safety record, Bright employs and empowers an inhouse safety officer to lead our safety policies.

Our Safety Officer with the help of our veteran team and local and state authorities have constructed our diligent safety legislation, to provide a safe and healthy work environment for employees, contractors, customers, and visitors.

Bright's commitment extends to ensuring the organisation's operations do not place the local community at risk of injury or illness as a result of any of our business activities. This commitment encompasses a pledge to our environmental responsibilities discussed later.

**Bright Balustrading Pty Ltd recognises that management have the overall responsibility to provide a safe workplace. Therefore, each management representative will be held accountable for implementing this policy in their area of responsibility with further inspection during annual performance reviews. These responsibilities broadly encompass:**

## Facilitating a culture that enables continuous improvement in WHS performance.

01

Providing & maintaining the workplace in a safe condition.

02

Ensuring all WHS policies & procedures are implemented.

03

Actively promoting and being involved in those policies & procedures.

04

Providing internal & external resources as required to meet WHS commitments.



## ENVIRONMENTAL MANAGEMENT POLICY

Bright Balustrading Pty Ltd not only recognises its moral & legal responsibilities; we are fully committed leaders in prevention of pollution and consider the responsible management of environmental issues as an essential component of our business. Our policy extends our responsibilities in every capacity from material sourcing to sound practice and waste management.

# QUALITY ASSURANCE

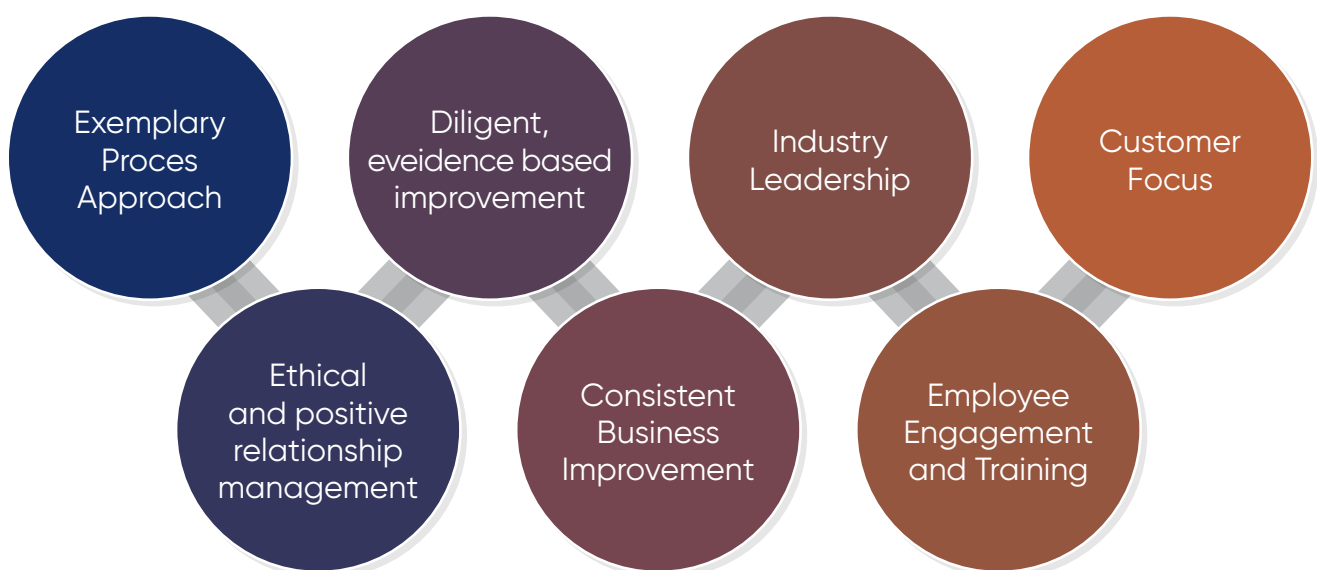
Bright has been around for over 20 years and is one of the longest serving business' in the Sydney metalworks market. It is our experience, continuous growth and commitment to our community that goes to prove how refined and experienced Bright Balustrading has become today.

We believe our unrelenting pursuit of quality is why Bright Balustrading is widely regarded as the go to for stainless steel metalworks needs.



However, it is our belief that we owe it to our customers to demonstrate our quality and that is why Bright Balustrading is one of a select few metalwork supply and installation companies with the world recognised ISO 9001 Quality Management Certification in all of Australia.

The International Standards Organization certification establishes that Bright excels in 7 principal areas to satisfy international recognition.



In any business sector, a company that has achieved ISO 9001 certification has a distinct operational advantage. For this and many other reasons, ISO certification is fast becoming a benchmark for successful business operations who are designed ultimately to benefit the end receivers of the products and/or services carried out.

Having an ISO management system assists improve our team's involvement within your business and operations. The certification leads to our team members to having a more detailed understanding of how their roles affect the delivery of the works. Furthermore,

Bright Balustrading can demonstrate a greater understanding of the training requirements of individual team members ensuring our works are delivered in the best way possible and with the highest quality.

Bright Balustrading's ISO9001 certification specifically ensures our commitment to continuous improvement. Adopting the requirements of any ISO management system solidifies recognized best practice into any qualifying business

For Bright, it means each management system is built with the involvement of experts from around the world who identified the basic elements a business should put in place.

By using ISO9001 to design our Quality Management System (QMS), Bright have drawn on this tried and tested expertise and have designed an effective management system that has led to improved operations. With this improvement in operations comes an improvement in operating efficiency, organisational performance, and productivity.

Bright's ISO Certification provides external recognition from other quality assured companies which include client companies, suppliers, contractors, & others. This allows the ISO issuing authority to recognise Bright has systems including (but not limited to):

Corrective  
action process

Accountability and  
traceability systems

Risk management  
systems

Active & ethical  
customer complaints  
procedures

Proactive system  
for addressing  
non-conformance

And a continual  
problem-solving ethos  
leading to upgrading  
operations & performance.

All clients, suppliers and any other parties that interact with Bright Balustrading are also benefactors from these systems either directly or indirectly.

Despite our international recognition, Bright does not stop at satisfying these standards. We also have an effective quality management system in place allowing Bright Balustrading to be better equipped to serve our client's needs.

We consistently improve our efficiency in day-to-day administrative duties as well as for the supply and installation of our products and services. This efficiency also allows for costs to be saved which we pass onto clients giving maximum value for money as well as the confidence that there are verified, value driven systems in place that take the client from first interaction right through to works completion and even post completion.

# BRIGHT BALUSTRADING INSURANCES

## Work Compensations

Bright Balustrading has a current "icare Workers Insurance" for its employees. We are happy to supply our Certificate of Currency upon request

Bright's worker's insurance policy provides an employer coverage in the event one of our or your employees suffers a work-related injury or illness. The policy insures businesses against the cost of supporting your injured worker and may include:

Weekly  
compensation  
benefits.

Medical  
and hospital  
expenses.

Rehabilitation  
services.

Certain  
personal items  
(e.g., clothing or  
spectacles damaged  
in work-related  
accident).

Lump sum  
payment  
for death or  
permanent  
impairment.

NSW regulations mandate that all employers provide Worker's Insurance unless you are considered an 'exempt employer'. An employer is any person or business entity that employs or hires workers on a full time, part time or casual basis, under an oral or written contract of service or training contract. Without a valid certificate, your business may be fined or penalised up to \$55,000 with a possible six-month imprisonment. Working directors of a corporation are considered employees of the corporation.

For more info, please visit <https://www.icare.nsw.gov.au/>

# PUBLIC LIABILITY

General Liability insurance, also known as Public and Product Liability insurance, helps to protect your business in the event a claim for compensation is brought against us for injury or damage arising out of the course of business.

Bright Balustrading has a duty of care to prevent harm or damage to all people and property you or your employees encounter during the course of business.

To ensure full compliance and duty of care, Bright maintains our Public Liability insurance for the insured sum of **\$20 million**.



Try as we might to prevent these incidents, they are often beyond our control. It might be a slip or trip that causes injury or even a faulty product that damages property.

**They may not even be Bright's fault. But they could cost millions.**

## Public Liability used for:



### Personal injury

Claims for medical costs and damages that result from an injury or illness caused by your business.



### Property damage

Claims for physical loss, destruction or damage to tangible property caused by your business.



### Legal costs

Covers the costs we incur to defend you and your reasonable expenses incurred to defend a claim against your business.

# PROFESSIONAL INDEMNITY- ENGINEERING CONSULTANT

Bright Balustrading only uses an external engineering consultant who are reputable, experienced, and equipped with Professional Indemnity insurance. This is important for all parties including the client as it assures them adequate recourse is available where necessary

A Civil Liability Professional Indemnity  
Wording tailored specifically for Design &  
Construction Professionals covering key  
exposures in the following disciplines:



Engineering



Architecture



Surveying



Construction/Project Management



Town Planning



Drafting



Certification

## CERTIFICATE OF STRUCTURAL ADEQUACY

PROJECT :   
ADDRESS :   
CLIENT : Bright Balustrading  
ELEMENTS : Balustrade system consisting of 50.8x2CHS Grade 316 Stainless Steel top & bottom rail, 25.4x2.5CHS Vertical Infill, 100x6mm S/Steel Grade 316 Kerb/Kick Rail and 50.8Ø x 3 CHS Post welded to steel beam and core drilled to concrete.

Balustrade system consisting of 50.8x2CHS Grade 316 Stainless Steel top & bottom rail, 25.4x2.5CHS Vertical Infill, 100x6mm S/Steel Grade 316 Kerb/Kick Rail and 50.8Ø x 3 CHS Post welded to steel beam and core drilled to concrete are structurally adequate for C3 loading based on the fixing details described in the typical design in shop drawing.

This is to confirm that Balustrade system consisting of Balustrade system consisting of 50.8x2CHS Grade 316 Stainless Steel top & bottom rail, 25.4x2.5CHS Vertical Infill, 100x6mm S/Steel Grade 316 Kerb/Kick Rail and 50.8Ø x 3 CHS Post welded to steel beam and core drilled to concrete, at the subject address comply with the relevant B.C.A. requirements and S.A.A. Codes and is suitable for the proposed usage. We confirm that verification and certification of the above elements have been undertaken in accordance with:

- National Construction Code – Building Code of Australia 2022 (BCA)
- AS/NZS 1170.0:2002 – Structural Design Actions (General Principles)
- AS/NZS 1170.1:2002 – Structural Design Actions (Permanent, Imposed and Other Actions)
- AS/NZS 1170.2:2021 – Structural Design Actions (Wind Actions)
- AS 4100:2020 – Steel Structures
- AS 3600:2018- Concrete Structures

No other standards or practices have been relied upon for this certification.

We certify that the computations for the design have been carried out by a practicing and qualified structural engineer. Should you require any further information, please do not hesitate to contact Ertaz Chowdhury at 0420 710 548.

Note: This certificate shall not be construed as relieving any other party of their responsibilities, liabilities, or contractual obligations.

## Cover Includes (Key Features):

- ◉ Automatic Reinstatement
- ◉ Breach of Confidentiality
- ◉ Claims Preparation Costs (\$25,000)
- ◉ Consumer Protection Legislation
- ◉ Continuous Cover
- ◉ Court Attendance Costs
- ◉ Dishonesty of Employees
- ◉ Fidelity (\$50,000 maximum)
- ◉ Contractual Liability
- ◉ Infringement of Intellectual Property
- ◉ Joint Venture Liability
- ◉ Libel or Slander
- ◉ Lost Documents
- ◉ Official Investigation and Enquiry Costs (\$250,000)
- ◉ Public Relations Expenses (\$50,000)
- ◉ Run Off Cover Insured Entity or Subsidiary
- ◉ Statutory Liability (\$250,000 Maximum)
- ◉ Sub-contractors, Consultants and Agents (Vicarious)
- ◉ Technology Services

# COMMUNITY INVOLVEMENT

Bright Balustrading is proud to have been involved in the upgrade of Brotherhood boxing's facilities. Bright designed and fabricated new boxing bag supports to ensure safety and longevity for all users. We also supplied and installed new supports to replace the old and also adding additional bag supports to allow the gym to cater to more of the community.

Bright was involved in the design, fabrication, supply, and installation of the new, bigger & better boxing ring. This was to allow gym goers to experience and train in a professional sized ring and dream of what it would be like to reach the heights of the professional boxing world. Bright continues to support Brotherhood boxing as we believe it is important to give back to the community, especially the community our company operates in. Bright believes ethos is to support locally and to support the local community's youth gym.



# CUSTOMER SERVICE PHILOSOPHY

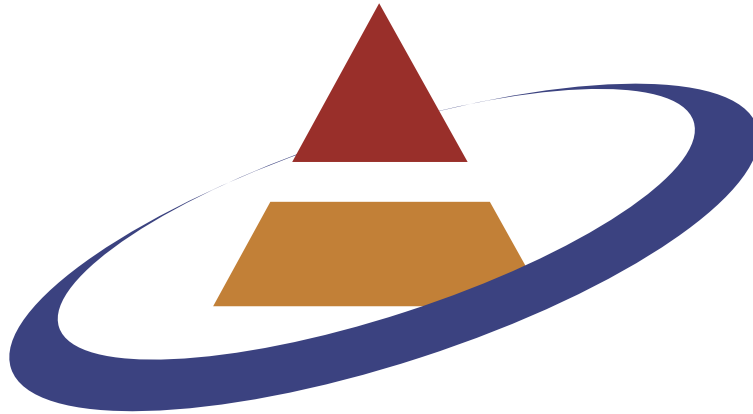
Bright Balustrading is a part of your community and we endeavour to make every project we touch a glistening success. We know your pride of place depends on your contractors tending to the finer details so that is what we focus on.

Our team is blessed with industry leading accreditation and veteran experience with over 2000 successfully completed projects all around Sydney and New South Wales. The combined 100+ years of experience of the Bright team assures that you are being served by the best in the business. We cut no corners and source all our materials in a transparent process that gives you confidence because it is important to us.

Our entire process from providing free quotation services to our after-sales handover documentation and care is constructed to ensure each customer feels heard, valued, and inevitably impressed. We treat each client with respect and professionalism and deliver a more efficient and stunning result than you might think possible.

Ultimately, we  
espouse our values  
of quality, expertise,  
and experience in  
everything we do for  
each client no matter  
the project.





# BRIGHT BALUSTRADING

[brightbal.com.au](http://brightbal.com.au)

**Company Name/Trading Name:**  
**Bright Balustrading Pty Ltd**

Address: 72 Stacey St Bankstown 2200 NSW AUSTRALIA  
Australian Business Number (ABN): 79 137 298 803  
Australian Company Number (ACN): 137 298 803  
Email: [metalwork@brightbal.com.au](mailto:metalwork@brightbal.com.au)

**Metal Fabricator – Bright Balustrading Pty Ltd**  
NSW Contractor Licence Number: 247744C  
Phone: 02 9791 5994